

K - R - E

Kirk Real Estate

# Springwood Close, Maidstone

NHS ACCOMMODATION

Providing the NHS with modern accommodation for their staff and students with Environmental, Social, and Corporate Responsibility.



# K-R-E. A property development business built on values, experience and exceptional client service.

Founded by Kirk Graham, K-R-E is dedicated to generating appropriate risk adjusted returns across a variety of real estate sectors at any time during a Real Estate Cycle.

With over 30-years experience acquiring, developing, adding value and working in Partnerships the senior management team have a proven track record in delivering quality projects in a timely fashion.

Successful projects that have been undertaken include refurbishments, new build projects, change of use from office to residential, mixed use schemes, planning gains and break-ups.

Working with some of the most prominent companies in the industry means that for each project a "best in class" team is assembled.



# A Philosophy of innovation and partnership.

The term innovation derives from the Latin word *innovatus*, which is the noun form of *innovare* "to renew or change". Innovation refers to the creation of better or more effective products, processes, technologies or ideas.

Innovation can only be developed through effective market knowledge and intelligence, at K-R-E we pride ourselves on developing strategies that will not only drive our business forward but will set us apart from the crowd.

With a proven track record in completing successful partnerships with landowners, funders and other investor and developers K-R-E is ideally placed to maximise value from an asset and manage the full development and or investment cycle.

## Full development process undertaken including:

- Site identification
- Feasibility
- Design
- Delivery
- Handover
- Sales



# Springwood Close, Maidstone NHS Accommodation

Working with M&G we acquired 6 residential blocks of Hospital staff key worker accommodation on a site of circa 3 acres in Maidstone.

The properties are let to the local NHS Trust and provide much needed key worker accommodation and offered potential for further active management and development.

Planning permission was subsequently obtained and a new build scheme delivered providing modern high specification accommodation for NHS staff and its medical students.

The new accommodation will help to increase staff satisfaction & retention, providing much needed accommodation thereby benefiting the NHS's overall operations.



# Property Specification

True to Kirk Real Estate's philosophy Springwood Close has been designed and created with Environmental, Social, and Corporate Governance in mind with well-appointed high specification accommodation.

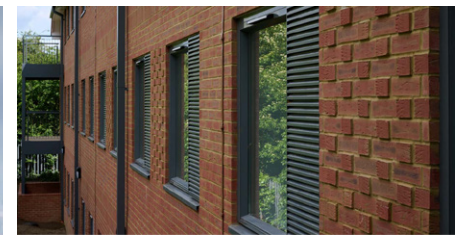
During the tendering and construction process every effort was made to ensure maximum life efficiency and minimum replacement costs throughout the buildings life, thereby reducing its overall carbon footprint and minimising on-going management and maintenance costs

**Environmentally the development performs strongly:**

- Energy Performance Certificate Rating B
- BREEAM Rating Very Good
- Large array of Photovoltaics
- Electric car charging points
- Sustainable transport provision
- On site parking



# Gallery



# K-R-E Delivering exceptional results.

“ Delivered on time & to budget, it was a pleasure to work with KRE and we look forward to our next project together. ”

Director M&G Plc

“ Exemplary accommodation delivered to a high specification by KRE, many thanks for a extremely positive contribution to our accommodation provision. ”

Chief Executive, Maidstone  
and Tunbridge Wells NHS Trust



**Kirk Real Estate Ltd.**

Mercury House, 19-21 Chapel Street  
Marlow, Buckinghamshire  
SL7 3HN

0203 490 5957 | [info@kirkrealestate.co.uk](mailto:info@kirkrealestate.co.uk) | [kirkrealestate.co.uk](http://kirkrealestate.co.uk)



[info@kirkrealestate.co.uk](mailto:info@kirkrealestate.co.uk)

[kirkrealestate.co.uk](http://kirkrealestate.co.uk)

0203 490 5957